

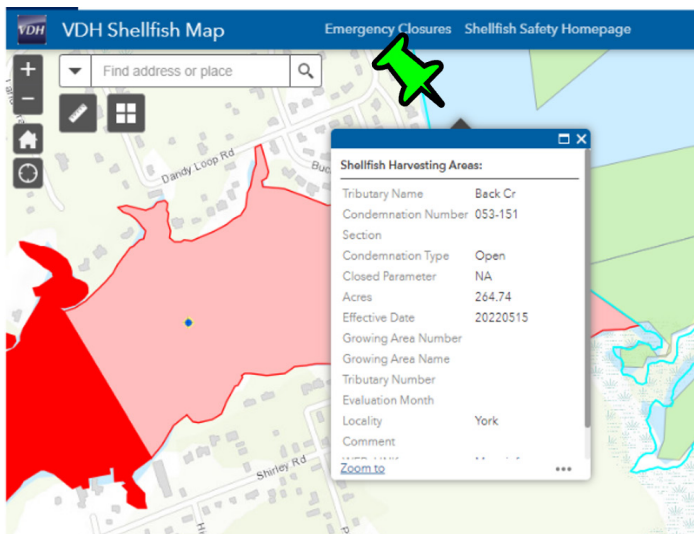
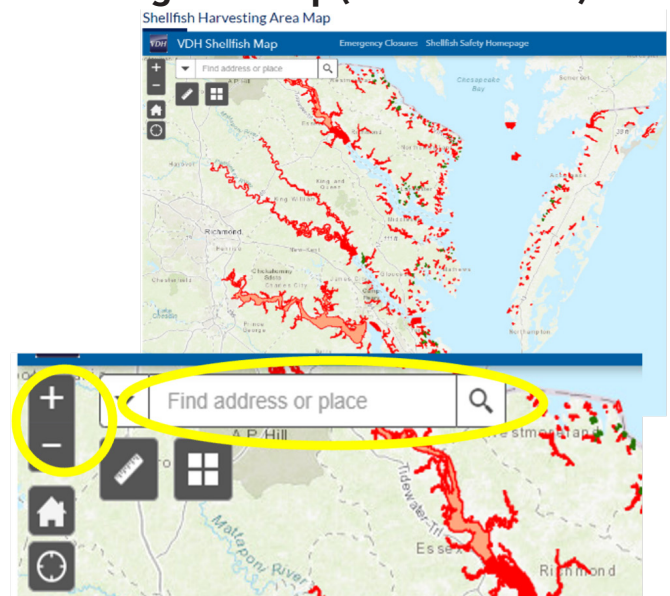
# WHERE CAN I FIND GROWING AREA CLASSIFICATION INFORMATION?

You can look up the growing area classification in several different ways on both the Virginia Department of Health and Virginia Marine Resources Commission websites. Which you choose depends on your comfort level with using GIS maps and additional information you may want, such as water quality sampling station locations and data. While there are physical condemnation signs posted in some locations, the absence of a sign should not be used to determine it's safe to eat oysters from your location. Condemnations change as water quality conditions change and the signs aren't always visible or present. These online maps should be used as the source for information.

## OPTION 1: VDH Shellfish Safety (DSS) - Shellfish Harvesting Area Map (recommended)

1. Go to the "**Shellfish Harvesting Area Map**" from the Shellfish Safety Homepage
2. Enter your address in the box located in the upper left corner of the map.
3. Adjust the map as needed by zooming in or out using your mouse or by using the + and - buttons located in the upper left of the map (beside the address).
4. Click the mouse on your garden location to access the classification information which will come up as a text box entitled 'Shellfish Harvesting Areas'.

**Examples are included below** along with the information that should be listed in your Permit application.

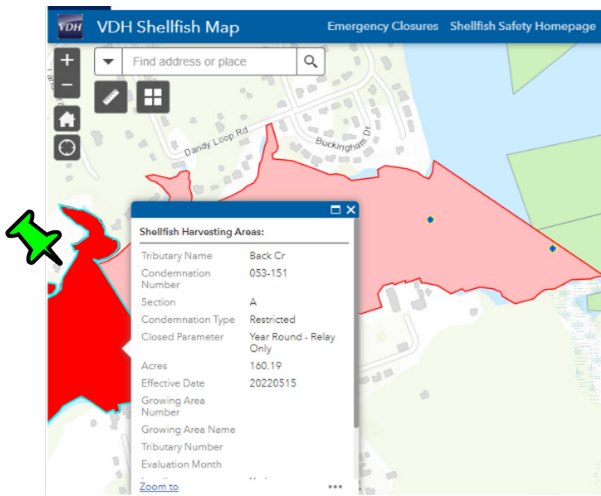


**OPEN (blue background)**

This area has a condemnation number, but no section number. The condemnation type is OPEN, which means the area is approved for harvest.

.....

**VMRC Oyster Gardening Permit:**  
Condemnation Number: 053-151  
Section: Open (open areas don't have section numbers so "approved" is the correct response)



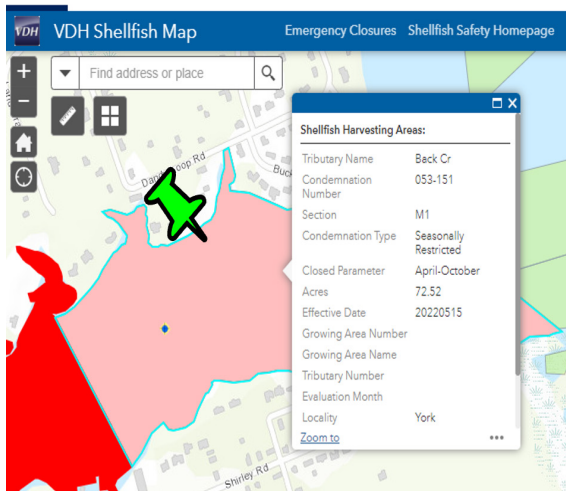
**CONDEMNED/RESTRICTED (dark red)**

This area condemnation type is **RESTRICTED**, which means shellfish *cannot* be harvested for consumption.

**VMRC Oyster Gardening Permit:**

Condemnation Number: 053-151

Section: A



**SEASONALLY RESTRICTED (light red)**

This area condemnation type is **SEASONALLY RESTRICTED**.

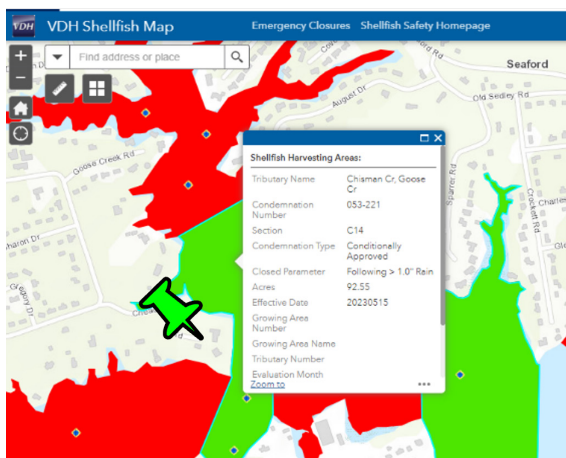
This means the area is temporarily placed in closed status due to a predictable seasonal pollution trigger, such as areas in close proximity to a marina.

- April - October, shellfish cannot be harvested for consumption
- November - March, shellfish can be harvested for consumption

**VMRC Oyster Gardening Permit:**

Condemnation Number: 053-151

Section: M1



**CONDITIONAL (bright green)**

This area condemnation type is **CONDITIONALLY APPROVED**. This means the area is open for harvest unless a 'condition' has been met. If that condition is met, the area will be converted to closed (restricted) for a set duration of time. Rainfall-based conditionally approved waters are in the **CLOSED** status for 10 days if rainfall exceeds a specific threshold, in this case, greater than 1 inch.

Updates can be found on the **VDH Conditional Harvest Area Website** and/or sign up for **VDH text notifications**.

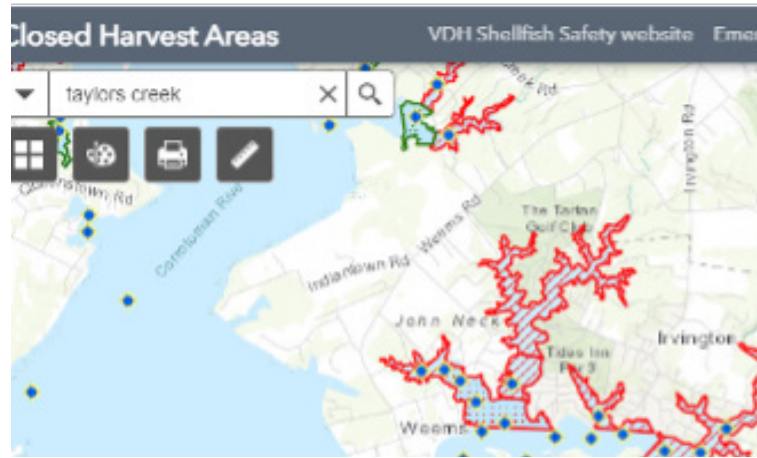
**VMRC Oyster Gardening Permit:**

Condemnation Number: 053-151

Section: C14

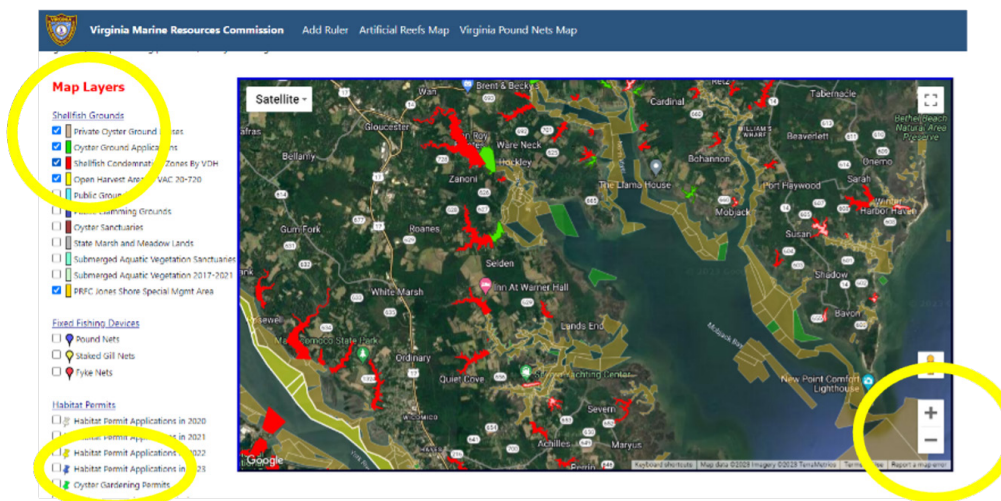
## WANT MORE INFORMATION ON THE LOCATION OF SHELLFISH SAFETY SAMPLING SITES AND WHAT THE DATA SHOW?

If so, zoom into the map by using your mouse or the + button on the top left of the page until you see the bluish dots marking the stations. For specific station data, click on the station.



### OPTION 2: Virginia Marine Resources Commission (VMRC) Desktop Map

1. Go to the Links, Maps and Mobile Apps: <https://mrc.virginia.gov/links.shtm>
2. Click on **Chesapeake Bay Online Map**
3. Zoom to the area of interest using the + and - buttons on the bottom right of the screen. Click and hold the cursor on the map to move it to your location.
4. On the Map Layers menu (upper left) under Habitat Permits, select the box with the green pin icon "Oyster Gardening Permits". This will help you find your location faster.
5. On the Map Layers menu (upper left) under Shellfish Grounds, select the "Shellfish condemnation Zones by VDH" map layer.
6. If your garden area is highlighted (red or bright green), click on it and the specific condemnation information will appear with a link to the VDH/DSS condemnation report.
7. If there is no coloration in the location, it is open, or approved, for shellfish harvest.



Prepared by: Karen Hudson, VIMS MAP, [khudson@vims.edu](mailto:khudson@vims.edu)

Last updated: August 2023